

TECHNICAL INFORMATION HAVERHILL ARTS CENTRE

Technical Officer: Dylan Mills

technical@haverhillartscentre.co.uk

TELEPHONE: 01440 710174 (ADMINISTRATION)

TELEPHONE: 01440 714140 (BOOKING OFFICE)

FAX: 01440 714894

Please contact the technical officer to discuss ANY technical requirements, or usage of equipment listed below BEFORE YOUR BOOKING. (Give as much notice as possible).

STAGE (flat):

Stage Dimensions (including wings, excluding apron):

11.85m across, 6.15m wall to tabs.

Apron Dimensions (in front of tabs):

6.85m across, 1.10m tab line to edge.

Usual Performance space (tabs open, including apron):

6.85m across, 6.75m cyc to edge of apron.

Usual Performance space (tabs closed, excluding apron):

6.85m across, 5.65m cyc to tab line.

Max height on stage: 4.5m (because of metal purling across stage (up stage))

Grid height: 7.5m

There is a crossover behind cyc of 0.5m wide

DRESSING ROOMS:

There are two dressing rooms each with eight mirrored tables with individual lighting, hand basin, shower and WC. Each dressing room has a paging system with local volume control.

THEATRE:

The theatre seats 210 people (raked seating), or 280 people standing.

The seats can be packed away to create more floor space with the aid of an electrical seating system.

The theatre has an inductive loop fitted for the hard of hearing.

STAGE LIGHTING:

Usual Rig:

DSR, DSC, & DSL Cold (steel L117) and warm (L152) washes from FOH
USR, USC, & USL Warm (L152) wash from FOH
3x(L152) Tab warmers from FOH.
Red, Blue, Amber, Green Stage Washes (and parcans)

Control:

Zero 88 "Bull Frog" (96 channels) (DMX512)

Circuits:

72 (2kw each – Strand LD90 Dimmers)
1 (5kw house lights)

STAGE (48 Dimming Channels Total, distributed across patch boxes and DIPS):

Lx1 Bar : 12 Circuits (I.W.B.) Stage right. (Usually Red Phase)
Lx2 Bar : 10 Circuits (I.W.B.) Stage right. (Usually Red Phase)
Lx3 Bar : 12 Circuits (I.W.B.) Stage right. (Usually Blue Phase)
Lx4 Bar : 10 Circuits (I.W.B.) Stage right. (Usually Red Phase)
Lx5 Bar : 12 Circuits (I.W.B.) Stage right. (Usually Blue Phase)
Lx6 Bar : 6 Circuits (Codas) Stage right. (Red Phase)

DIPS:

6 Lx Stage dips paired across stage (all red phase) :
Down stage 3 x 2 circuits 43,44,45
Up stage 3 x 2 circuits 46,47,48

FRONT OF HOUSE (24 Dimming Channels Total):

24 circuits (I.W.B.) (Yellow Phase)

Luminaries:

Fresnels

10 x CCT Starlette Fresnels/Strand Cantata F 1000W with barn doors
10 x Strand Quartet F Fresnels 650w with barn doors

Profiles

6 x CCT Silhouette turbo 28/58 profiles 1000w
8 x Strand Prelude 16/30 Profiles 650w
4 x Strand Cantata 16/32 profiles 1000w

Floods

4 x Strand Nocturne 1 1000w floods
4 x Strand Coda 500/4 Floods (Flood Battens)

Parcans

4 x Teatro 1000 Par Cans (Usually CP62)

16 x Showtec 1000 Par Cans (Usually CP62)
4 x Showtec 500 Floor Par Cans

Moving Heads

2 x MAC250 Profiles (on FOH) - (SL DMX350, SR DMX300)
2 x MAC300 Colour Washes (on FOH) (SL DMX250, SR DMX200)

Follow Spot:

1 x Teatro 2kw follow spot with stand and colour magazine

Other equipment is available – but must be hired in, and may incur an additional charge.

SOUND

Front Of House (2.4k RCF rig):

4 x RCF PA 121 Full range cabs (L+R flying top fill, and L+R side fills—Driven By Yamaha P3200)
2 x RCF PA 180SW Sub Woofers (Driven by Crest CA12)
1 x 2 way Active Stereo Crossover

Monitoring:

4 x 300w+ channels of monitoring in house with individual 31band Graphic Equalisers
4 x ASS Monitor Speakers (15" Woofer, 1" Horn)
2 x Mackie c300z Speakers

Mixing desk :

Sound Craft SX 12 Channel Desk
Allen and Heath MixWizard W3 16:2
Allen and Heath GL2200 (32 Channel)

Other Equipment:

1 x cassette deck
2 x CD player (1 with auto pause)
1 x Mini Disk recorder with auto pause
A limited number of microphones are held in stock (4 x SM58, 4 x SM57)
1 x Multicore 16/4 (Stage Left)
1 x Multicore 8 (Stage Right)
1 x BSS Opal FCS966 2Channel 31 Band EQ on FOH
2 x TOA E-1231 Single Channel, 31 Band EQ
1 x Peavey Q231F 2Channel 31 Band EQ
1 x Yamaha SPX990
1 x Lexicon MX200
2 x Behringer MDX4400 4Channel Compressors
1 x Behringer XR4400 4Channel Gate

Other equipment is available – but must be hired in, and may incur an additional charge.

STAGE MANAGEMENT

4 x Canford TecPro Single Muff head sets + belt packs for intercom (available from SL, SR, Lighting Control, FOH Mix position and Follow Spot)
1 x stage management console, including cue lights (Stage Right)
6 way telephone intercom

Flying

7 x winch sets (Winches Stage Left)
5 x hemp sets (Tied Stage Left)

Tabs

One motorised house curtain track (house tabs blue)
2 x additional bars for legs
4 x black borders
2 x sets of black tab runners (Pulled from Stage Left)
White CYC

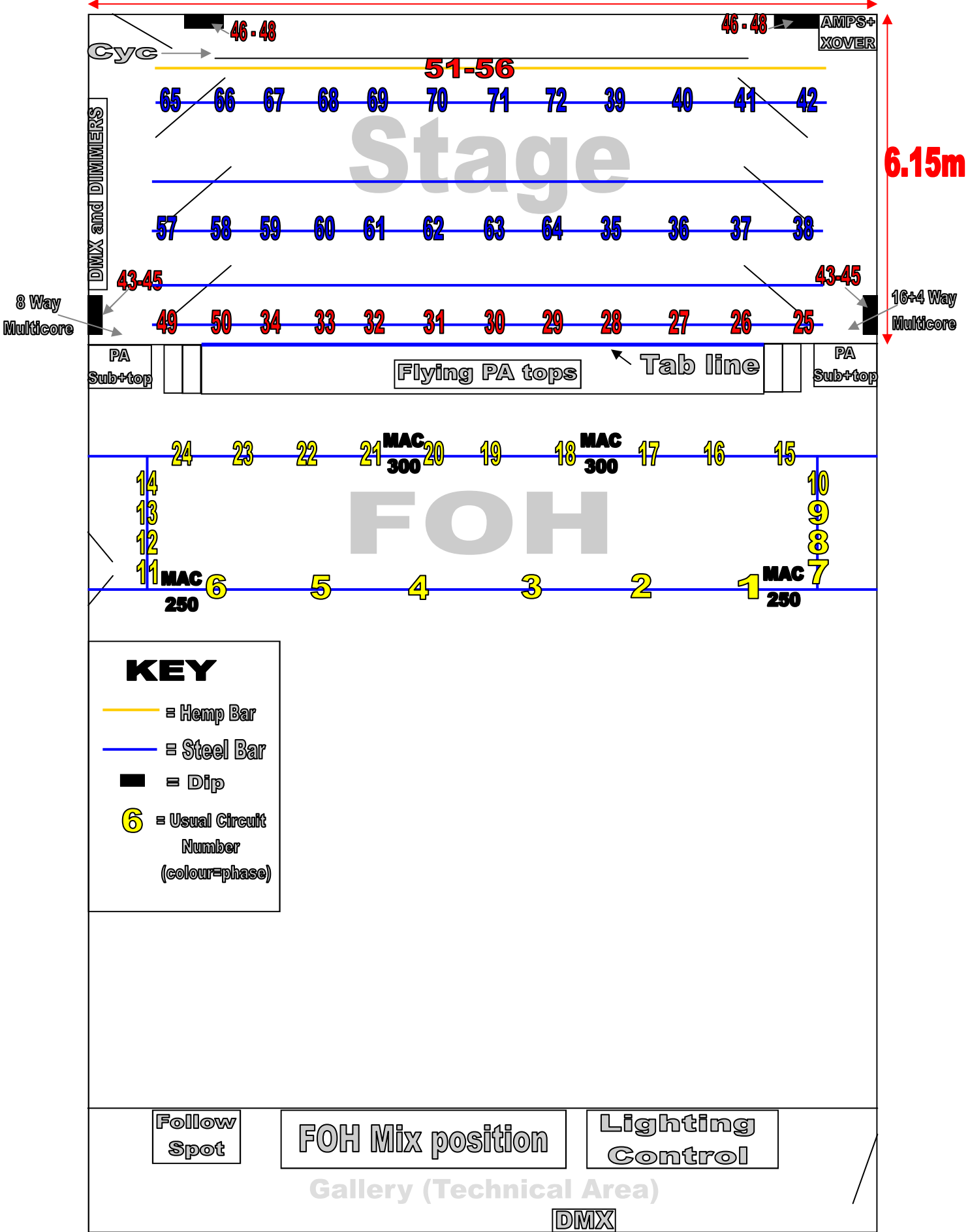
CINEMA/PROJECTION

One 6m x 3m cinema screen (just behind house tabs)
One Century MSC-TA 35mm cinema projector
Dolby CP45 Cinema Processor

DTS XD-10 Subtitling/Audio Description system with Panasonic PT-D3500E Projector

We also have a portable SONY VPL-PX21 Data projector.

11.85m



Please ensure that you email ANY requirements/requests to technical@haverhillartscentre.co.uk well in advance of your booking.

HAC Grid Spacing

(by BP, accurate 09/2008)

HAC Cyc	0.60m
HAC LX7 (codas) (4 sockets)	0.45m
US tabs	0.3m
LX6 (12 sockets)	0.65m
LX5	0.50m
Fixed masking for legs	0.25m
HAC hemp masking	0.1m
LX4 (10 sockets)	0.75m
Mid tabs	0.30m
LX3 (12 sockets)	0.55m
LX2 (10 sockets)	0.75m
Hemp masking for legs	0.2m
LX 1 (12 sockets)	0.45m
House Tabs	0.1m
Apron	